



2023 BOOTS



WWW.JACKSONULTIMA.COM



ALSO IN



PINNACLE OF LIGHTWEIGHT

DJ6075

Supreme tongue prevents slipping & twisting of laces, eliminating lace bite

Duraguard over the toes provides cut resistance

Soft collar provides superior leg extensions without aggravating the tendons

Non-abrasive lightweight anti-bacterial fabric lining

Swarovski crystals



Energy

PRO



ALSO IN



SUPERIOR SHOCK ABSORPTION



DJ6285L



Asymmetrical interior ankle pads wrap anatomically around the foot for customized fit and comfort

Ankle punch outs that are molded into the design

Super lightweight 3D injection/ lasted quarters with lateral stability and flexibility

Unique 2-piece molded side-panels are cut resistant and fully heat moldable. Combined with the Jackson Wrap this provides unparalleled lateral support

Textured new-age carbon fiber look

Synergy

ELITE



ALSO IN



Custom Fit in Minutes

DJ6060F



FUSION

All of the technologically advanced features of the Synergy Pro, on Fusion soles.

SYNERGY SOLE OPTIONS



PINNACLE OF LIGHTWEIGHT

- Flexibility and rigidity that, combined with Pebax® outsole & ABS insole, provides unmatched weight and strength
- The 3 piece design allows the use of ABS heels for strength and security of screws
- Sleek low-profile look

Models: DJ6060, DJ6075, DJ6085



SUPERIOR SHOCK ABSORPTION

- Lightweight support that comes from Carbon Fiber
- Reduced torque and moisture resistant

Models: DJ6060L, DJ6075L, DJ6085L, DJ6285L, DJ6295L



FUSION

LIGHTWEIGHT REDEFINED

- Constructed from lightweight nylon composite
- Torque resistant and waterproof
- Rubber inlay provides non-slip blade mount and superior shock absorption

Models: DJ6060F, DJ6075F, DJ6085F, DJ6285F, DJ6295F



JACKSON 5000 SERIES



 Supreme 5300

JACKSON ULTIMA
SUPREME 5300



SUPREME 5300



ALSO IN



SUPREME 5362



ALSO IN



Supreme Tongue

Molded insert protects against lace bite and prevents slipping and twisting of the tongue

Flex design on molded piece and overlay provides the flexibility and support needed without restrictions



High performance felt is resilient, but retains strength, feel and comfort.

Innovative design eliminates laces bunching in one area after flexing and sit-spins. Keeps the pressure evenly distributed over the Deltoid Ligaments.



6000 Series Tongue Review w. Kaetlyn O...



#JACKSONFAMILY

JACKSON 5000 SERIES



Jackson Men's Elite and Elite Low Cut



TO CREATE THE BEST MEN'S SHOES, WE DIDN'T HAVE TO LOOK FAR.



Lightweight Stability Platform

SUPREME LOW CUT 5430



Lightweight Stability Platform

SUPREME LOW CUT 5462



AVAILABLE WITH BLACK SOLES

SUPREME PRO

5320



- ✓ Premium Suede
- ✓ Heat Moldable
- ✓ Supreme Tongue
- ✓ Fusion Sole
- ✓ Swarovski Crystals

JACKSON 2000 SERIES

Jackson offers the 2000 Series in a variety of support levels:



Jackson Ultima 2000 Series Boots



PREMIERE 2800



PREMIERE 2802



JACKSON DEBUT



DEBUT 2450/2451

WOMENS/MISSES



DEBUT 2452/2453

MENS/BOYS





FUSION



Each 2000 Series boot features the Fusion Sole, a solid, lightweight sole made from nylon composite material which is torque resistant and waterproof. A rubber inlay provides non-slip blade mount.



ENTRE 2330/2331

WOMENS/MISSES



DEBUT LOW CUT 2430

WOMENS/MISSES



The PERFECT MATCH Jackson Flex



FS2000



Jackson Flex Boots



You're light in stature but long on talent. Elle would be the perfect skate, but you need more performance from your blade...

Welcome to **Flex!**
All the features of our Fusion Series Skates with the flexibility of Blade choice.

ULTIMA
Technology Is Our Edge



THE PERFECT FIT



*Custom Fit in
Minutes*

We design boots to fit tight when cold. With Jackson's Heat Moldable Fit System, your Skate Technician uses heat to soften and mold the boots. As the boot cools, it retains the shape of your foot.



Jackson Ultima Instant Custom: Heat Molding



MAXIMIZE PERFORMANCE MINIMIZE INJURIES



THE JACKSON WRAP SYSTEM

Designed for exceptional fit, the Jackson Wrap System secures your foot, stops internal movements and slipping, and provides better stability. An internal layer of leather provides enhanced strength, support, and comfort. Performance Flex Notch, standard on Jackson Boots minimizes ankle and knee strain on forward flex while improving stability.

CUFF WRAP
with internal leather
reinforcement for
Strength & Support



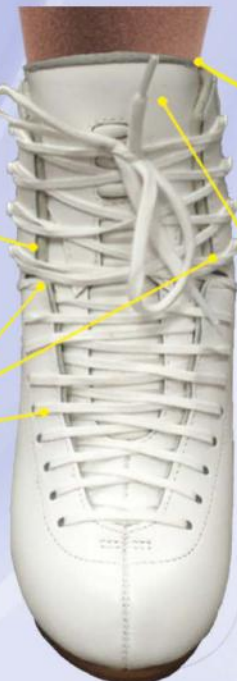
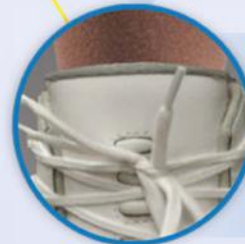
**ACHILLES
CUSHION, SOFT
CUFF, & U-SHAPE
THROAT** for Comfort
& Stability



**GRADUATED
INSTEP WRAP**
with **FLEX NOTCH**
to minimize knee/ankle
strain while supporting
Ankle Flex



**SHIN CUSHION,
TONGUE
SUPPORT & LACE
LOCK** for superb
Comfort and to
eliminate Lace Bite





THE PERFECT FIT

SUPPORT RATINGS

The appropriate level of support is critical to skater performance and injury prevention. Selecting a boot that is too stiff for the skater's ability and physical characteristics can seriously impede the flexibility necessary to perform and develop skating skills. It can also result in injury as the skater is unable to properly break-in the boot. A boot that is too soft will result in a lack of support impacting performance and can lead to premature breakdown of the skates.



Jackson Ultima - Support Rating



MAXIMIZE PERFORMANCE

MINIMIZE INJURIES



JACKSON - A FIT FOR ALL FEET

Fit is established by the Last, which defines the shape and dimensions of the Boot. Jackson Boots are available in 2 standard widths:



Jackson
Regular Last

Jackson Performance (R-A/B) Last
This last provides wider toes and narrow heels for competitive fit. Run throughout our boot products makes transitioning easier.

Jackson Adapted Width (AW) Last
This last provides a more relaxed fit, particularly in the Arch area, while retaining our generous toe box and excellent heel lock, ideal for flat feet.



Adapted
Width Last



Standard sizes fit most requirements, however Jackson Custom can build a Boot to your exact specification. Jackson has an extensive Inventory of Lasts (AAA to EEE) to fit all foot shapes!



The Figure Skate Company

JACKSON ULTIMA FIT GUIDE

The chart is a guideline to help you choose a model. Selection of product should be made in consultation with Authorized Jackson Dealers and experienced Skate Technicians. Skate Technicians have been trained and have extensive experience in boot fitting and modifications.

	WEIGHT /JUMPS	SINGLES	DOUBLES	TRIPLES
BOOTS	Less than 60 lbs/30 kg	Flex Entré	Flex Entré	Debut
	60 - 115 lbs/30 - 58 kg	Flex Entré Debut	Debut Premiere 5000 Series Synergy	Premiere 5000 Series Synergy
	MORE than 115 lbs/58 kg	Entré Debut	Premiere 5000 Series Synergy	5000 Series Synergy
BLADES	All Skaters	Aspire Series Protege Series Legacy Series Matrix Legacy	Legacy Series Protege Series Matrix Legacy Apex Series Matrix Advanced Matrix RXS	Apex Series Matrix Advanced Matrix RXS
OUTFITS	Less than 60 lbs/30 kg	Elle Freestyle		
	More than 60 lbs/30 kg	Freestyle		

**# JACKSON
FAMILY**



WWW.JACKSONULTIMA.COM

#JacksonFamily

We would like to thank the many Jackson athletes that participated in the development of **Jackson Boots**. We are indebted to the skaters for their input in design features and performance testing.



KEEGAN MESSING

"The new Synergy Boots are a real game changer. The Perfect Fit and reflex-like ability of the material is out of this world!"

Grand Prix Medalist
ISU Challenger Medalist
Canadian Medalist
CS Champion
Junior Grand Prix Gold Medalist



MARJORIE LAJOIE & ZACHARY LAGHA

"Simply the best skates! We dance with Jackson because we find them comfortable. The blades are strong and they last long!"

Grand Prix Medalists
Canadian Medalists
Junior World Champions
Junior Grand Prix Champions
Canadian Junior Champions



CAMDEN PULKINEN

"Jackson is awesome! Their customer service is the best in the business and the LCF carbon fiber bottoms look so sick on the new boots!"

Junior Grand Prix Final Medalist
Junior Grand Prix Gold Medalist
US Junior Champion

NATHAN CHEN

"I couldn't imagine using any other boot. The craftsmanship and technology allows me to perform to the best of my ability!"

World Champion
Grand Prix Final Champion
Grand Prix Gold Medalist
ISU Four Continents Champion
US Champion

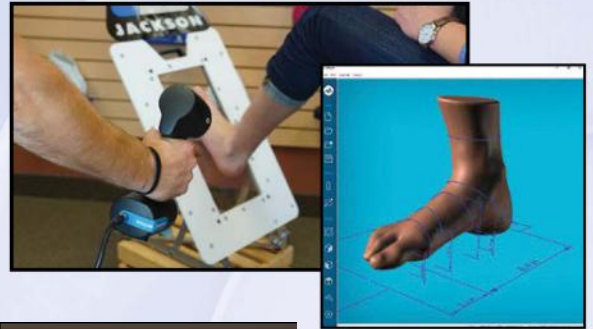




CUSTOMIZE YOUR

STEP 1 - DETERMINE SIZE

A traditional sizing or 3D scan method will be used to determine your correct size and identify any non-stock widths or unique characteristics.



Instant Custom

In most cases, stock Jackson Boots can be Heat Molded by your Skate Technician to provide a Perfect Fit. However, if a Custom Solution is required, ask for Jackson Custom.



Custom Fit in Minutes

JACKSON BOOT



STEP 2 - BOOT SHAPE / SUPPORT



If your measurement / scan reveals the need for a Non-Stock Width or other unique characteristics (ie. bunions, spurs, etc.), your boot can be shaped to accommodate!



Select your desired Support Rating in either the corresponding stock boot, or your desired Support Rating can be manufactured into the boot of your choice.



CUSTOMIZE YOUR

STEP 3 - CHOOSE TONGUE

Choose your tongue based on the desired support, thickness and feel.



6000



5000



4000



JACKSON BOOT



STEP 4 - CHOOSE SOLE




A solid, lightweight sole made from nylon composite material which is torque resistant and waterproof. A rubber inlay provides non-slip blade mount.

Available in:  Natural  Silver
 Black  Grey
 Gold



Flexibility and rigidity that, combined with Pebax[®] outsole & ABS insoles, provides unmatched lightweight and strength. The 3-piece design allows the use of ABS heels for strength and security of screws. Combined, with a sleek, low-profile look and rubber inlay.

Available in:  Tan

FROM TH

Hear from the most elite skaters in the world on the



 Mental Toughness w. Ashley Cain-... 

MENTAL TOUGHNESS
w. ASHLEY CAIN-GRIBBLE & TIMOTHY LEDUC



OLY
MITR



The Figure Sk



 Getting Comfortable with the Unc... 

GETTING COMFORTABLE WITH THE UNCOMFORTABLE
w. Jimmy Ma







WWW.JACKSONULTIMA.COM

THE PRO'S

their preparation, dedication, and love for the sport!



 Practice Makes Perfect with Eliška... 

**MENTAL PREP,
SUPERSTITIONS,
HOW PRACTICE
MAKES PERFECT**

w. Eliska Brezinova



Ice Skating Company



 #JacksonFamily Interview w. Alys... 

**"THE THING THAT WILL
GET YOU GOOD IS
THE LOVE FOR
THE SPORT."**

ALYSA LIU



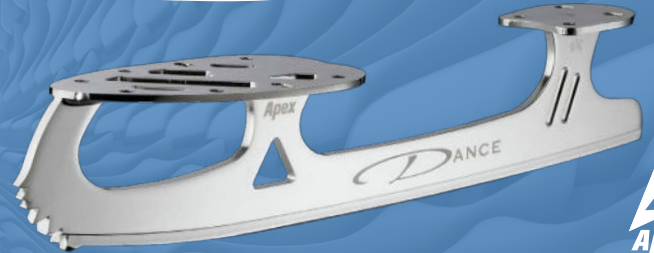
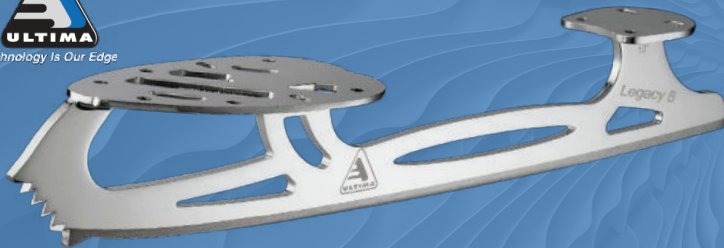
MULTIMA.COM



The Figure Skate Company



Matrix



Driven to Perform

Jackson is driven to produce the best figure boots, blades and skates in the industry. We utilize **proprietary advanced materials** combined with design features developed from working with **world class skaters**, their **coaches** and leading **skate technicians**.

At Jackson Ultima, we are Driven to Perform.

Jackson Ultima Skates

505 Thompson Drive, Unit 5
Cambridge, Ontario, Canada N1T 2K7
Tel: 1-800-263-1666 Fax: 1-800-461-8958

(Consumer Site)

JACKSONULTIMA.COM

Jackson Ultima Europe BV

Kraaivenstraat 23-07
5048 AB Tilburg, The Netherlands
Tel: +31(0)13 4637600

(Trade Site)

JACKSONULTIMASKATE.COM



#JacksonFamily



J2023DIGBOOTS